

INSTANT TRANSFORMATIONS

VOLUME, LENGTH, AND COLOR AT YOUR FINGERTIPS.

Whether for a special occasion or to enhance your everyday hair, you deserve products designed with comfort and style in mind. Revolutionizing the hair extension industry with the Original HALO®, we strive to offer products that are easily self-installed and non-damaging, completely customizable and commitment-free, and made with 100% Remy human hair coated with a protective keratin seal for a soft, silky, and luxurious result.



AFTER



BEFORE

BLEND-INS



Creating Hair Happiness.

#HALOCOUTURE



T: 800-220-0906
36625 Kevin Road, Suite 140, Wildomar, CA 92595
@halocoutureextensions
halocouture.com



THE WORLD OF HALOCOUTURE

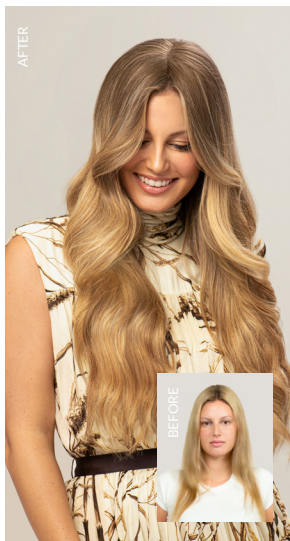
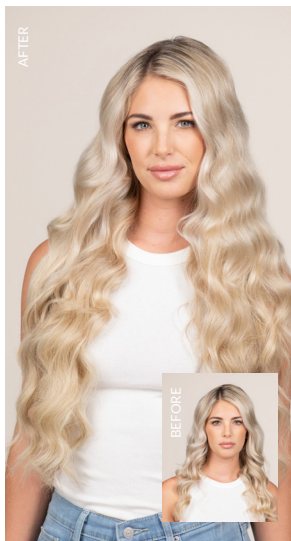


HALO
couture

Don't wait any longer, let's create hair happiness together!

Ask your stylist which HALOCOUTURE extension is right for you.

THE HALO



THE FALL

THE BANG



THE PONY



OUR OFFERINGS



The Original HALO®

LENGTHS: 12" | 16" | 20" | 24"
COLORS: 23 ORIGINAL | 7 BALAYAGE

The Original HALO is non-damaging, virtually undetectable, and ideal for adding natural and effortless length and volume without the commitment of other traditional extension methods.



The Layered HALO®

LENGTHS: 14" | 18" | 22"
COLORS: 23 ORIGINAL | 7 BALAYAGE

The Layered HALO has quickly become our most popular extension. Uniquely designed and unlike any other product available, it has 2-3 built-in, gradual layers, providing a seamless blend with natural hair. With 30% more grams than The Original HALO, The Layered HALO delivers maximum volume for dense or thick hair.



Blend-Ins

LENGTHS: 16" | 20"
COLORS: 23 ORIGINAL

Blend-Ins are designed using first-of-its-kind clip-in technology for the most invisible result. Injected hair at the seam creates the most discreet and undetectable install. With a variety of widths, these clip-ins can be customized to anyone and create a full transformation in seconds!



The Original Fall®

LENGTH: 16" - 18"
COLORS: 23 ORIGINAL & ROOTED | 7 BALAYAGE

The Original Fall is a hand-tied, breathable weft with a lace base, perfect for clients wanting maximum volume and coverage. Our damage-free design is gentle on fine or thinning hair. The Original Fall conceals hair loss, thinning, and new growth between color services while adding length and fullness instantly.



The Hybrid Fall®

LENGTH: 14" - 16"
COLORS: 23 ORIGINAL & ROOTED | 7 BALAYAGE

The Hybrid Fall is a lightweight and more accessible version of The Original Fall, created with a combination of hand-tied and machine-sewn technology and paired with a fabric base to deliver a seamless and natural blend. Our lightweight hybrid design provides natural but subtle coverage and volume with added relief for fine or thinning hair.



The Bang

LENGTH: 13" - 14"
COLORS: 23 ORIGINAL & ROOTED

The Bang is a lightweight and versatile extension piece that instantly transforms. This extension is completely customizable, giving you the ability to cut and style to compliment your natural hair. Perfect for a quick change in look or conceal thin or broken hair around the hairline.



The Pony

LENGTH: 16"
COLORS: 23 ORIGINAL

Attached comfortably and securely with a small built-in comb, The Pony is a versatile extension designed to add commitment-free volume and length to your updo. It is equipped with a section of hair that wraps around to conceal the hair tie, allowing for an instant transformation with a seamless blend.

